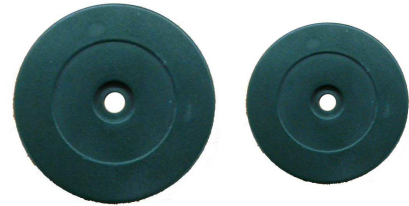


Product Datasheet

On-metal Tags

BrightCard On-metal Tags are passive transponders for industrial environment. They have an integrated ferrite shielding, which minimizes the effect of metal surfaces. They fit perfectly for the identification of goods and objects in "metal" applications.

BrightCard On-metal Tags are available with 125kHz and 13,56MHz technology.



Applications:

- Industrial
- Warehouse

Product specification:

Dimensions:	35 x 4mm with 5mm hole 52 x 8mm with 5mm hole
Antenna type:	Wired
Material:	ABS
Metal layer:	Ferrite 0,7mm
IC type:	NXP I-Code SLI (1024bit) EM4100 (125kHz Read Only!)
Reading distance:	Up to 6cm
Application temp.:	- 40°C to 60°C
Order number:	MT-ICSLI MT-4100

Other IC types available on request!

Technology by:

